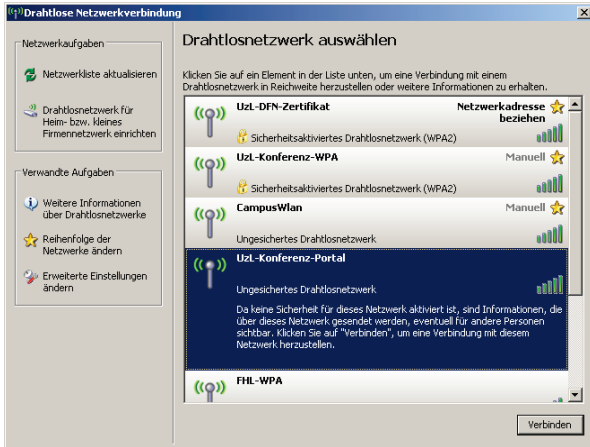




1. Choose the „UzL-Konferenz-Portal” from the list of available wireless lan networks and click „connect“.



2. To gain access to the network, please open a random website.

You will be redirected to a login prompt.

A login form with two input fields: 'Username:' and 'Password:'. Below the fields is a 'Proceed' button.

[Use the secure version of this form](#)

3. Please enter your username and your password.
4. The connection is now established.